

Vintage Style

created by
proportion > london

Bustforms



Harlequin classic female
VSF01



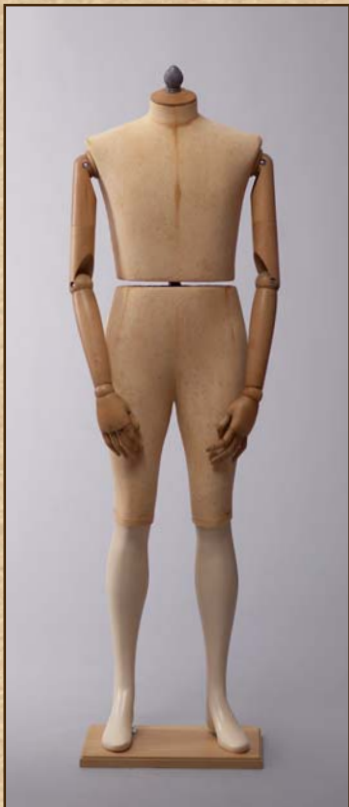
Full body
VSF02



Cutaway body
VSF03



Knitwear body
VSF04



Harlequin classic male
VSM01



Full body
VSM02



Cutaway body
VSM03



Blouson form (trouser bar optional)
VSM04



3/4 hanging lingerie form
VSF05



Female fichu
VSF06



Corset form
VSF07



Articulated female
VSF08



3/4 hanging form
VSM05



Open back shirt bust
VSM06



Tuck away shirt bust
VSM07



Articulated male
VSM08

Vintage Style



Skirt form
VSF09

Focusing specifically on aged finishes, proportion>london's Vintage Style collection offers you the most authentic "new/old" bust forms available today. Vintage Style creates a display form that will beguile even the most fastidious of antiquarians!

We showcase here, our favorite and most requested body shapes and cuts, but also offer you access to a library of over 85 moulds that include numerous different body shapes and sizes.

Each shape is lovingly handmade at our London factory to your exact specifications. The production process remains virtually the same as it was over a century ago: natural materials, eco-friendly manufacturing techniques and handmade quality all feature in this range.

The process is simple:

- 1 – Select a body shape or cut from our vast collection
- 2 – Choose a covering fabric and ageing finish
- 3 – Decide on a base and neck cap finished to your brief
- 4 – Specify any embellishments, stencils or finish details

We also have a Vintage Style Accessories collection to complement this range, completing the most captivating antique style look for store interiors combined with modern functionality.

created by
PROPORTION LONDON



Trouser form
VSM09



Male and female miniature forms



Child size bust forms are available in three different body shapes

Bases and Neck Options



Raw dressmakers base
VSB01



Brass dressmakers base
VSB02



Brass vintage base
VSB03



Horseshoe hanging base
VSB04



Horseshoe base
VSB05



Tricorn base
VSB06



Scroll base
VSB07



London base
VSB08



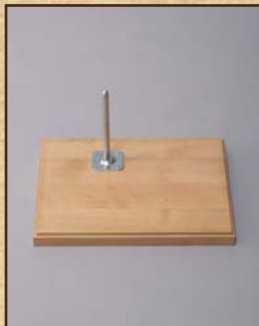
Paris medallion base
VSB09



Hexagon base
VSB10



Paris countertop base
VSB11



Harlequin oblong base
(male/female) VSB12



Head (male/female)
VSN01



Hat-dome neck
VSN02



Trouser bar
VSN03



French neck/finial
VSN04



Metal ring neck
VSN05



Closed in neck
VSN06



Flat wooden neck
VSN07



Pinecone neck
VSN08



Vintage neck
VSN09



Domed wooden neck
VSB10



Antique neck/finial
VSN11



STAINING OPTIONS
Front figure - tea stained
Back figure - coffee stained



our

Vintage Style Accessories

collection is available to complement this product range

proportion > london

9 dallington street london EC1V 0LN tel: +44 (0)20 7251 6943
email: sales@proportionlondon.com www.proportionlondon.com